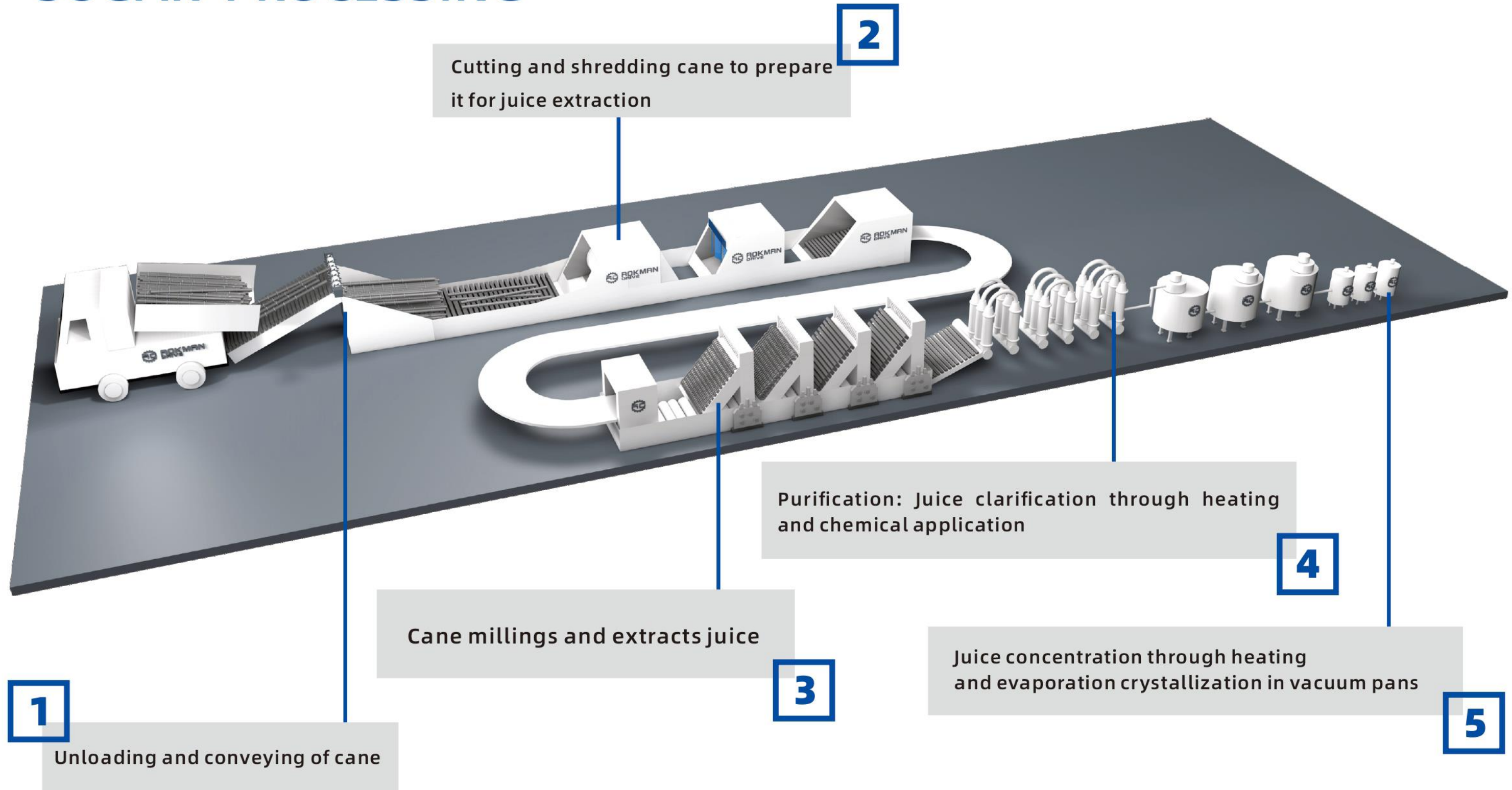
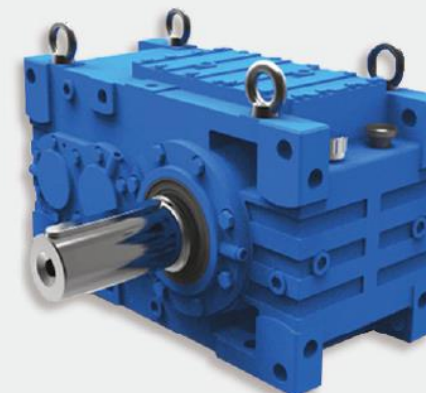
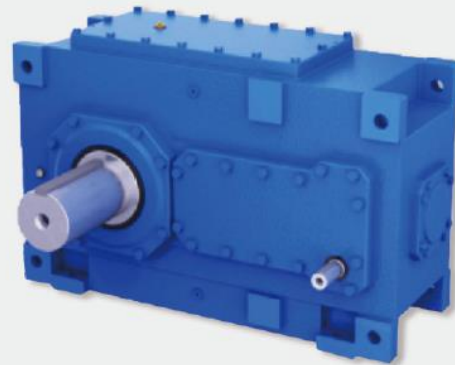
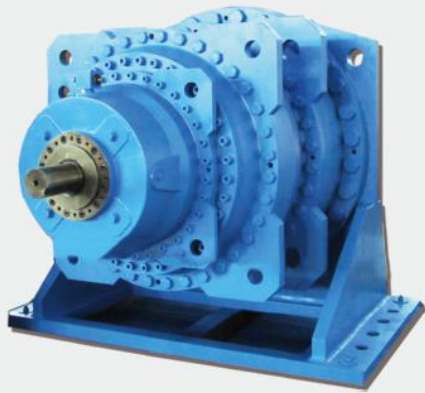


# SUGAR PROCESSING



## SUGAR MILLS APPLICATION



### P Series

#### Roller Press Planetary Gearboxes

1. High efficiency and low maintenance costs
2. Suitable for heavy duty working conditions and applications
3. Increased power density due to planetary output stages
4. The gearbox operates without unwanted downtime even in the harsh environments

**Torque Range:**

22~2600000

**Power Range:**

0.4 ~ 6700

**Ratio:**

25~4000

### H Series

#### Industrial Gear Units

1. Highly modular design and combinable spare parts
2. Sturdy cast iron or steel welding gearbox
3. Reduced costs and weight due to high power density and finely stepped sizes
4. The AOKMAN H Series Gear units are ideally suited for use in many applications such as crystallizer drive, rotary juice and mud mixture

**Torque Range:**

up to 900000

**Power Range:**

1.5 ~ 4946

**Ratio:**

1.25 ~ 450

### MC Series

#### Industrial Gearbox

1. Extensive input options and mounting designs
2. This parallel shaft design offers you a great deal of freedom in system design and requires remarkably little space
3. MC industrial gear units are ideal for heavy duty applications due to their high torque capacity

**Torque Range:**

8000~65000

**Power Range:**

7.05~1066

**Ratio:**

7.1~112

### ZY Series

#### Cylindrical Gear units

1. Optional welding steel plate gearbox
2. High quality alloy steel helical gears, large load capacity
3. Optional backstop and lengthening output shafts
4. Due to their high performance and flexibility, The ZSY Series Gear units are ideally suited for use in many applications such as crystallizer drive, rotary juice and mud mixture

**Torque Range:**

450~600000

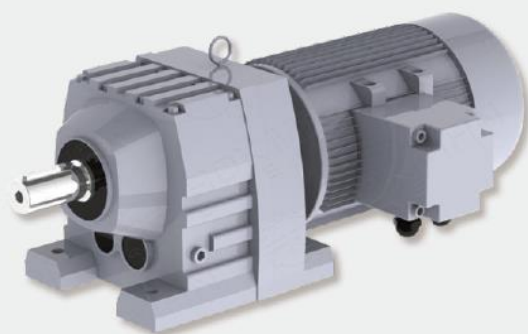
**Power Range:**

31~ 6666

**Ratio:**

1.25~500





## R Series

### Inline Helical Gear Motors

1. Compact structure, model design
2. Single-stage, two-stage and three-stage sizes
3. High reduction ratio and torque density
4. Can be combined with other types of gearboxes
5. R Series gearboxes are ideally suited for use in the rubber belt of sugar mill

**Torque Range:**

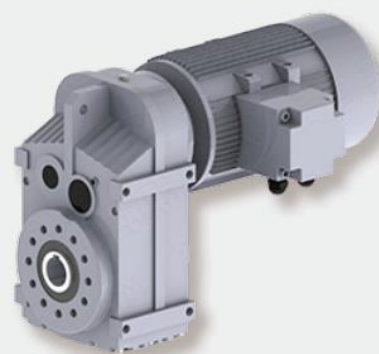
85~50000

**Power Range:**

0.18~132

**Ratio:**

1.3~289.6



## F Series

### Parallel Shaft Gear Motors

1. Modular design, compact structure.
2. Typically used in conveyors and materials processing applications
3. Multi-stage (2 or 3 stage) gear units for low output speed
4. Out-put shaft: Solid or hollow

**Torque Range:**

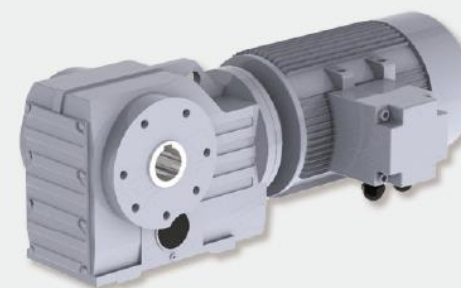
130~50000

**Power Range:**

0.12~200

**Ratio:**

3.81~281.71



## K Series

### Helical-bevel Gear Motors

1. Compact structure, modular design
2. High efficiency of the gear units of over 90%
3. Multi-stage (2 or 3 stages) gear units for low output speed
4. Can be combined with other types of gearboxes

**Torque Range:**

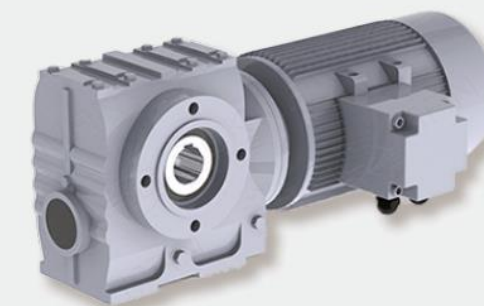
200~50000

**Power Range:**

0.18~200

**Ratio:**

5.63~192.18



## S Series

### Helical-worm Gear Motors

1. Modular design, compact structure
2. Low noise
3. Out-put shaft: Solid or hollow
4. Hollow out-put shaft: With keyed connection, shrink disc, splined hollow shaft or torque arm

**Torque Range:**

90~4000

**Power Range:**

0.18~22

**Ratio:**

10.27~244.74

# BENEFITS

- More ruggedness
- Lower initial investment
- Higher reliability
- Lower energy consumption
- Lower costs of extraction and fewer milling losses
- Lower maintenance costs

